



Status of Electric Competition in Michigan

In compliance with Public Act 141 of 2000

February 1, 2025

Dan Scripps, Chair
Katherine Peretick, Commissioner
Alessandra Carreon, Commissioner

Contents

- Introduction..... 4
- Status of Competition for Electric Supply 5
 - Overview 5
 - Michigan’s Electric Choice Program 5
 - 2016 Energy Laws 6
 - Alternative Electric Suppliers 6
 - Load Served Through Electric Customer Choice Program 7
 - Consumers Energy Electric Customer Choice Program.....7
 - DTE Electric Company Customer Choice Program7
 - Upper Peninsula Power Company (UPPCo) Electric Customer Choice Program..... 8
 - Upper Michigan Energy Resources Corporation (UMERC) Electric Customer Choice Program9
 - Cloverland Electric Cooperative Electric Customer Choice Program.....10
 - Indiana Michigan Power Company Electric Customer Choice Program.....10
 - Benchmarking Michigan’s Electric Prices.....12
 - Residential Rates.....12
 - Commercial Rates.....16
 - Industrial Rates18
- Commission Action Related to Electric Choice and Customer Protections 20
- Commission Action on Customer Education 20
- Recommendation for Legislation 20
- Appendices.....21
 - Appendix 122
 - Figure 1: Retail Electric Markets In the U.S.22
 - Figure 2: AES Customers in Consumers Energy Service Territory.....23
 - Figure 3: Consumers Energy Electric Customer Choice Program Activity.....24
 - Figure 4: AES Customers in DTE Electric Company Service Territory.....25
 - Figure 5: DTE Electric Customer Choice Program Activity.....26
 - Figure 6: AES Customers in the UPPCO Service Territory.....27

Figure 7: Upper Peninsula Power Company Customer Choice Program Activity.....	28
Figure 8: AES Customers in the UMERC Service Territory.....	29
Figure 9: Upper Michigan Energy Resourcesw Corporation Electric Choice Program Activity.....	30
Figure 10: AES Customers in the Cloverland Service Territory.....	31
Figure 11: Cloverland Electric Cooperative Retail Choice Program Activity.....	32
Figure 12: AES Customers in the Indiana Michigan Power Service Territory.....	33
Figure 13: Electric Choice Customer Participation.....	34
Appendix 2.....	35
Michigan Public Service Commission Orders Related to Implementation of Public Acts 141 of 2000, 286 and 295 of 2008, and 341 of 2016	35
Appendix 3.....	37
Michigan Licensed Alternative Electric Suppliers	37

Introduction

The Customer Choice and Electricity Reliability Act (Public Act 141 of 2000, referred to throughout as Act 141) requires the Michigan Public Service Commission (Commission or MPSC) to file a report with the Governor and the Legislature by February 1 each year. This report represents the 20th year of electric choice in Michigan and includes a discussion of the following topics, pursuant to MCL 460.10u:

- a. The status of competition for the supply of electricity in Michigan.
- b. Recommendations for legislation, if any.
- c. Actions taken by the Commission to implement measures necessary to protect consumers from unfair or deceptive business practices by utilities, alternative electric suppliers, and other market participants.
- d. Information regarding consumer education programs approved by the Commission to inform consumers of all relevant information regarding the purchase of electricity and related services from alternative electric suppliers.

An important goal of Act 141 is to have competition within the electric industry by offering Michigan customers the opportunity to purchase electric generation services from their incumbent utility or an Alternative Electric Supplier (AES). The Commission does not regulate the prices charged by an AES for its services. Customers may choose between an unregulated AES rate or a regulated utility rate.

Public Act 286 of 2008 (Act 286) was enacted on October 6, 2008, and amended Act 141. Section 10a(1)(a) of Act 286, MCL 460.10a, provides that no more than 10 percent of an electric utility's average weather-adjusted retail sales for the preceding calendar year may take service from an alternative electric supplier at any time¹. On December 21, 2016, Public Act 341 (Act 341) of 2016 was signed and became effective on April 20, 2017. Act 341 amended Act 286. The Commission outlined the specific procedures pertaining to the implementation of the 10 percent cap and established a cap tracking system that utilities are required to make available online².

The electric choice programs for Consumers Energy Company, Upper Michigan Energy Resource Corporation, Upper Peninsula Power Company, Indiana Michigan Power and DTE Electric Company were fully subscribed at the 10 percent cap throughout the year and there continues to be approximately 5,899 customers statewide in the queue to participate in the choice program if space becomes available.

To date, Michigan remains one of 20 states that had full or limited restructuring of the competitive electric market. Benchmark information comparing Michigan's

¹ With the exception of Section 10a(1)(d) of Act 286 which excludes iron ore mining or processing facilities.

² Order dated April 28, 2018 in Case No. U-15801.

electric retail rates to the 20 restructured states, Midwest states, and the national average can be found starting on page 11.

In 2024, the Commission issued multiple orders that adhere to the established framework for Michigan’s electric customer choice programs and implement the provisions of Public Act 141 of 2000, Public Acts 286 and 295 of 2008, and Public Act 341 of 2016.

Status of Competition for Electric Supply

Overview

Retail Open Access (referred to throughout as “ROA”, “electric customer choice” or “electric choice”) for all customers of Michigan investor-owned electric utilities took effect on January 1, 2002. AESs currently serve electric choice customers in the Consumers Energy Company (Consumers Energy), DTE Electric Company (DTE Electric), Upper Peninsula Power Company (UPPCo), Upper Michigan Energy Resources Corporation (UMERC), Cloverland Electric Cooperative (Cloverland), and Indiana Michigan Power Company (I&M) territories.

Michigan is one of 20 jurisdictions that had full or limited restructuring of retail electric markets in 2024³. In Michigan, Public Act 286 caps electric choice participation at 10 percent of an electric utility’s average weather-adjusted retail sales for the preceding year. The 10 percent cap is reset annually to reflect the average weather-adjusted retail sales for the preceding year.

Specific information pertaining to the status of electric choice participation for each utility can be found at their respective websites.⁴

Michigan’s Electric Choice Program

Electric customer choice is available to all customers of regulated electric utilities, excluding members of electric cooperatives with loads of less than one megawatt (MW)⁵. Michigan’s current retail electric market maintains regulation of most utility generation and distribution while allowing for competitive energy supply.

As of December 2024, there were approximately 5,514 customers participating in the electric choice programs (compared to 5,539 in 2023). This represents approximately 2,187 MW of electric demand, which is a decrease of about 611 MW from 2023. As of December 2024, approximately 5,899 customers remain in the queue, a modest

³ Figure 1 (Appendix 1).

⁴ <https://www.michigan.gov/mpsc/regulatory/electricity/customer-choice>

⁵ MCL 460.10x and MCL 460.10y outline different requirements for implementation for customer choice for cooperatively owned and municipal electric utilities. MCL 460.10x allows any retail customer of a rural electric cooperative with a peak of 1 megawatt or above to select an alternative electric supplier. MCL 460.10y provides that the governing body of a municipally owned utility determines whether it will permit choice programs in its service territory.

decrease from 5,981 in 2023. There was a decrease in the total electric choice load in 2024 and electric choice participation remained around 10 percent for each utility.

2016 Energy Laws

Public Act 341 of 2016 updated Michigan's energy laws relating to utility rate cases, electric customer choice, certificate of necessity, and electric capacity resource adequacy, and establishes an integrated resource planning process. Act 341 amended Public Act 3 of 1939 and Public Act 286 of 2008. On September 29, 2009, the Commission adopted procedures regarding the allocation of the amount of load to be served by AESs. The Commission approved changes to these procedures pursuant to Act 341, which are attached as Appendix A to the April 28, 2017 Order in Case No. U-15801⁶.

Pursuant to MCL 460.10a(1)(c), the Commission issued orders adjusting the choice caps to zero for any utility serving fewer than 200,000 Michigan customers and that did not have any load served by an AES during the four-year period of April 20, 2013, to April 20, 2017. These orders were issued on July 12, 2017, for 12 utilities⁷ and directed that the cap for each utility automatically be reset to 10 percent on February 1, 2019. On February 1, 2019, I&M's cap was reset to 10 percent and the utility began enrolling customers in its electric choice program.

Additionally, every Michigan licensed AES is subject to the capacity demonstration and state reliability mechanism (SRM) provisions outlined in Section 6w of Act 341. Section 6w requires all electric providers, including AESs, to demonstrate to the MPSC that they have enough resources to serve the anticipated needs of their customers four years forward. If an AES cannot or chooses not to arrange generating capacity to meet the new requirement, all or a portion of its load would be subject to an SRM capacity charge. The SRM capacity charge is set by the MPSC and is paid to the utility in exchange for the utility serving as the provider of last resort for capacity service.

In 2024, the Commission opened case no. U-21775 for load serving entities to file their capacity demonstrations for the 2028/2029 planning year. The filing dates are February 24 and March 3, 2025 for utilities and March 17, 2025 for AESs.

Alternative Electric Suppliers

There were 21 licensed AESs with seven of those actively serving customers in Michigan as of December 2024⁸.

⁶ [Order dated April 28, 2017](#) in [Case No.U-15801](#)

⁷ These utilities include: Alger Delta Cooperative Electric Association (U-18372), Alpena Power Company (U-16086), Bayfield Electric Cooperative (U-18373), Cherryland Electric Cooperative (U-18374), Great Lakes Energy Cooperative (U-18376), Indiana Michigan Power Company (U-16090), HomeWorks Tri-County Electric Cooperative (U-18377), Midwest Energy Cooperative (U-18378), Northern States Power Company (U-16091), Thumb Electric Cooperative (U-18379), Presque Isle Electric & Gas Co-Op (U-18388), Ontonagon County Rural Electrification Association (U-18389).

⁸ See Figure 2, Figure 4, Figure 6, Figure 8, Figure 10 (Appendix 1).

Load Served Through Electric Customer Choice Program

Commercial and industrial customers accounted for almost all the participation in the electric choice programs during 2024. Typical choice participants are large industrial manufacturers and mid-size commercial customers, including retailers, restaurants, healthcare facilities, school systems, and other service providers. The number of residential choice customers participating in the electric choice program is negligible.

Consumers Energy Electric Customer Choice Program

The number of customers and the electric demand served by each AES in the Consumers Energy service territory at the end of each year is shown in Figure 2 (Appendix 1). The electric choice load served in the Consumers Energy service territory at year-end 2024 totaled 714 MW. This compares to 703 MW in 2023. There were 964 customers served by AESs at year-end 2024 compared to 937 in 2023⁹.

Additional information depicting trends in the Consumers Energy electric customer choice program is included in Appendix 1. Figure 3 shows the number of customers participating and the load served on a monthly basis from January 2023 through December 2024.

Below is a summary of cap related data for Consumers Energy for 2022–2024. To date, Consumers Energy is fully subscribed at the 10 percent cap.

Consumers Energy			
	2022	2023	2024
Weather-Adjusted Retail Sales	35,895,190 MWh	36,494,572 MWh	36,508,734 MWh
Participation Level	3,569,719 MWh	3,657,230 MWh	3,645,522 MWh
Participation Percent	9.94%	10.02%	9.99%
Customers in Service	938	937	964
Customers in Queue	3,295	3,170 MWh	3,073 MWh
Total Load in Queue	4,213,208 MWh	5,205,646 MWh	5,083,967 MWh
<i>Participation Percent w/o Cap</i>	<i>21.68%</i>	<i>24.29%</i>	<i>23.91%</i>

Consumers Energy experienced a decrease in the number of customers, load in the queue, and in the participation percent of load served from 2023 to 2024.

Hypothetically, if the cap did not exist, choice participation would be approximately 24 percent in Consumers Energy’s service territory.

DTE Electric Company Customer Choice Program

The number of customers and the electric demand served by each AES in the DTE Electric service territory at the end of the year is shown in Figure 4 (Appendix 1). The electric choice load served in the DTE Electric service territory at year-end 2024

⁹ Figure 2 (Appendix 1).

totaled 1,296 MW compared to 1,283 MW in 2023. The number of customers served by AESs totaled 4,347 at year-end 2024 compared to 4,410 in 2023¹⁰.

Additional information depicting trends in the DTE Electric’s electric customer choice program is included in Appendix 1. Figure 5 shows the number of customers participating and the load served on a monthly basis from July 2022 through December 2024.

Below is a summary of cap related data for DTE Electric for 2022–2024. To date, DTE Electric is fully subscribed at the 10 percent cap.

DTE Electric Company			
	2022	2023	2024
Weather-Adjusted Retail Sales	45,441,151 MWh	45,081,466 MWh	44,712,550 MWh
Participation Level	4,465,551 MWh	4,466,929 MWh	4,451,864 MWh
Participation Percent	9.83%	9.91%	9.96%
Customers in Service	4,624	4,410	4,347
Customers in Queue	2,884	2,777	2,779
Total Load in Queue	2,749,599 MWh	2,531,054 MWh	2,417,970 MWh
<i>Participation Percent w/o Cap</i>	<i>15.89%</i>	<i>15.52%</i>	<i>15.36%</i>

DTE Electric experienced a small increase both in the number of customers in the queue from 2023 to 2024, and in the percent of its load served by AESs.

Hypothetically, if the cap did not exist, choice participation would be approximately 15 percent in DTE Electric’s service territory.

Upper Peninsula Power Company (UPPCo) Electric Customer Choice Program

The number of customers and the electric demand served by each AES in the UPPCo service territory at the end of the year is shown in Figure 6 (Appendix 1). The electric choice load served in the UPPCo service territory at year-end 2024 totaled 8.7 MW compared to 13.7 MW in 2023. The number of customers served decreased at year-end 2024 to 65 compared to 69 in 2023¹¹.

Additional information depicting trends in the UPPCo electric customer choice program is included in Appendix 1. Figure 7 shows the number of customers participating and the load served on a monthly basis from June 2022 through December 2024.

Below is a summary of cap related data for UPPCo for 2022–2024. The current level of choice participation is approximately 14 percent. Hypothetically, if the cap did not

¹⁰ Figure 4 (Appendix 1).

¹¹ Figure 6 (Appendix 1).

exist, choice participation would be approximately 17 percent in UPPCo’s service territory.

Upper Peninsula Power Company			
	2022	2023	2024
Weather-Adjusted Retail Sales	741,288 MWh	728,749 MWh	674,997 MWh
Participation Level	80,703 MWh	84,284 MWh	92,120 MWh
Participation Percent	10.89%	11.56%	13.65%
Customers in Service	71	69	65
Customers in Queue	17	17	17
Total Load in Queue	18,309 MWh	18,309 MWh	21,840 MWh
<i>Participation Percent w/o Cap</i>	<i>13.36%</i>	<i>14.08%</i>	<i>16.88%</i>

Upper Michigan Energy Resources Corporation (UMERC) Electric Customer Choice Program

On December 9, 2016, the Commission approved a settlement agreement in Case No. U-18061¹² that permitted the creation of a new Michigan-only jurisdictional utility in the Upper Peninsula. UMERC was established on January 1, 2017, as a new Michigan-only jurisdictional utility in the Upper Peninsula. Former WEPCo and WPSC customers are now being served by UMERC.

The number of customers and electric demand served by each AES in the UMERC service territory at the end of the year is shown in Figure 8 (Appendix 1). The electric choice load served in the UMERC service territory at year-end 2024 totaled 81.4 MW compared to 88.4 MW in 2023. The number of customers served decreased from 76 at 2023 year-end to 73 at 2024 year-end.¹³

Additional information depicting trends in the UMERC electric customer choice program is included in Appendix 1. Figure 9 shows the number of customers participating and the load served on a monthly basis from July 2023 through December 2024.

Below is a summary of cap related data for UMERC for 2022–2024. The Tilden Mining Company (Tilden) load was transferred from WEPCo to UMERC in the first quarter of 2019, which is reflected in the Weather-Adjusted Retail Sales.

Note: MCL 460.10a(1)(f) provides that any customer operating an iron ore mining facility, iron ore processing facility, or both, located in the Upper Peninsula of this state shall be permitted to purchase all or any portion of its electricity from an alternative electric supplier, regardless of whether the sales exceed 10% of the serving electric utility’s average weather-adjusted retail sales. Because of this, the current level of choice participation is approximately 12 percent in UMERC’s service territory.

¹² See [Case No. U-18061](#).

¹³ Figure 8 (Appendix 1).

Upper Michigan Energy Resources Corporation			
	2022	2023	2024
Weather-Adjusted Retail Sales	2,197,650 MWh	1,993,206 MWh	2,088,104 MWh
Participation Level	274,388 MWh	276,265 MWh	244,338 MWh
Participation Percent	12.49%	13.86%	11.7%
Customers in Service	79	75	73
Customers in Queue	1	1	1
Total Load in Queue	102,562 MWh	60,010 MWh	73,644 MWh
<i>Participation Percent w/o Cap</i>	<i>17.15%</i>	<i>16.87%</i>	<i>15.23%</i>

Hypothetically, if the cap did not exist, choice participation would be approximately 15 percent in UMEREC's service territory.

Cloverland Electric Cooperative Electric Customer Choice Program

Beginning in December 2016, Cloverland had one customer taking electric choice. The electric choice load served in the Cloverland service territory at year-end 2024 totaled 9 MW, as shown in Appendix 1, Figure 10. The current level of choice participation is approximately 9 percent. Because there are no customers in the queue for Cloverland, if the cap did not exist, choice participation would still be approximately 9 percent in Cloverland's service territory.

Below is a summary of cap related data for Cloverland Electric for 2022-2024.

Cloverland Electric Cooperative			
	2022	2023	2024
Weather-Adjusted Retail Sales	772,115 MWh	788,470 MWh	789,270 MWh
Participation Level	75,494 MWh	72,059 MWh	71,024 MWh
Participation Percent	9.78%	9.14%	9%
Customers in Service	1	1	1
Customers in Queue	0	0	0
Total Load in Queue	0 MWh	0 MWh	0 MWh
<i>Participation Percent w/o Cap</i>	<i>9.78%</i>	<i>9.14%</i>	<i>9%</i>

Indiana Michigan Power Company Electric Customer Choice Program

The number of customers and the electric demand served by each AES in the I&M service territory at the end of the year is shown in Figure 12 (Appendix 1). The electric choice load served in the I&M service territory increased from 55.42 MW for year-end 2023 to 59.61 MW for year-end 2024. The number of customers served by AESs increased to 61 at year-end 2024¹⁴.

¹⁴ Figure 12 (Appendix 1).

Additional information depicting trends in I&M's electric customer choice program is included in Appendix 1. Figure 13 shows the number of customers participating and the load served on a monthly basis from January 2024 through December 2024.

Below is a summary of cap related data for I&M for 2022-2024. The current level of choice participation is approximately 11%. Hypothetically, if the cap did not exist, choice participation would be approximately 12 percent in I&M's service territory.

Indiana Michigan Power Company			
	2022	2023	2024
Weather-Adjusted Retail Sales	2,718,870 MWh	2,860,254 MWh	2,967,634 MWh
Participation Level	283,957 MWh	268,260 MWh	329,619 MWh
Participation Percent	10.44%	9.38%	11.11%
Customers in Service	47	47	61
Customers in Queue	16	16	29
Total Load in Queue	24,363 MWh	25,017 MWh	33,338 MWh
<i>Participation Percent w/o Cap</i>	<i>11.34%</i>	<i>10.25%</i>	<i>12.23%</i>

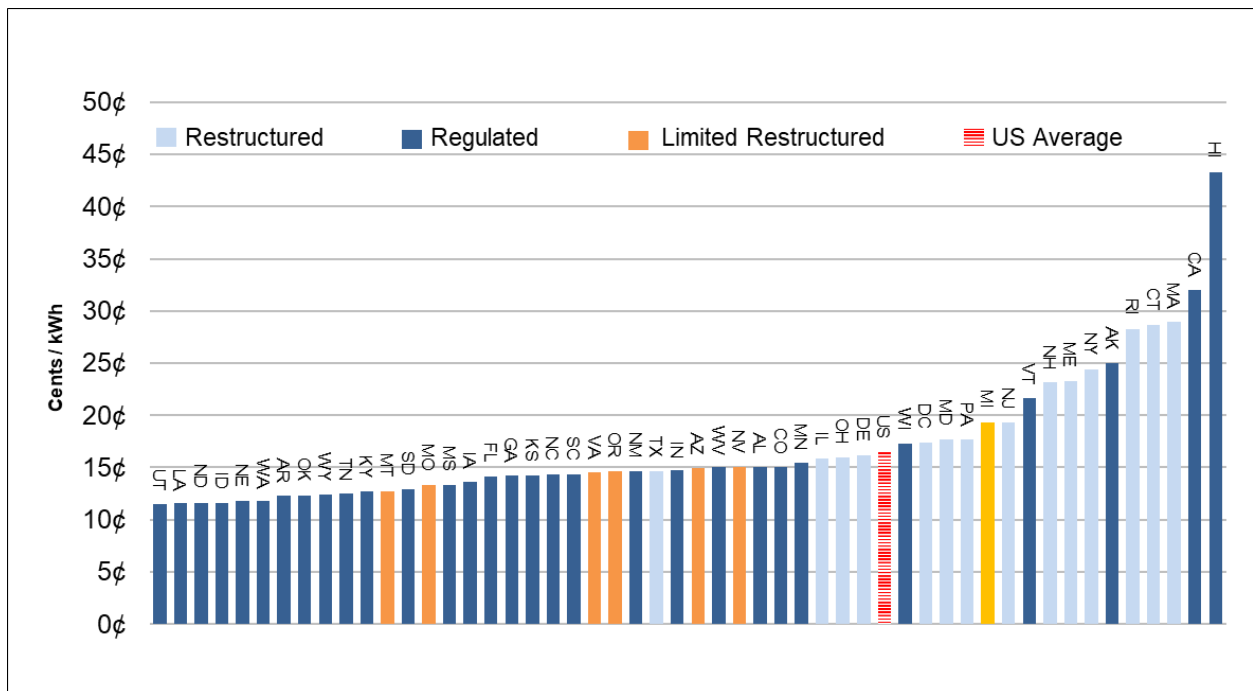
Benchmarking Michigan's Electric Prices¹⁵

This report provides benchmark data that compares every electric utility (IOUs, municipalities, and co-ops) in Michigan's electric prices to those of other jurisdictions based on customer class. The data shown in the following figures for 2024 reflects January through October 2024.

Residential Rates

The figure below reflects the 2024 average residential retail rates. In 2024, Michigan's average residential retail rates ranked twelfth highest among the 20 jurisdictions with some type of restructured market at \$0.1931/kWh.

Average Residential Retail Price, 2024



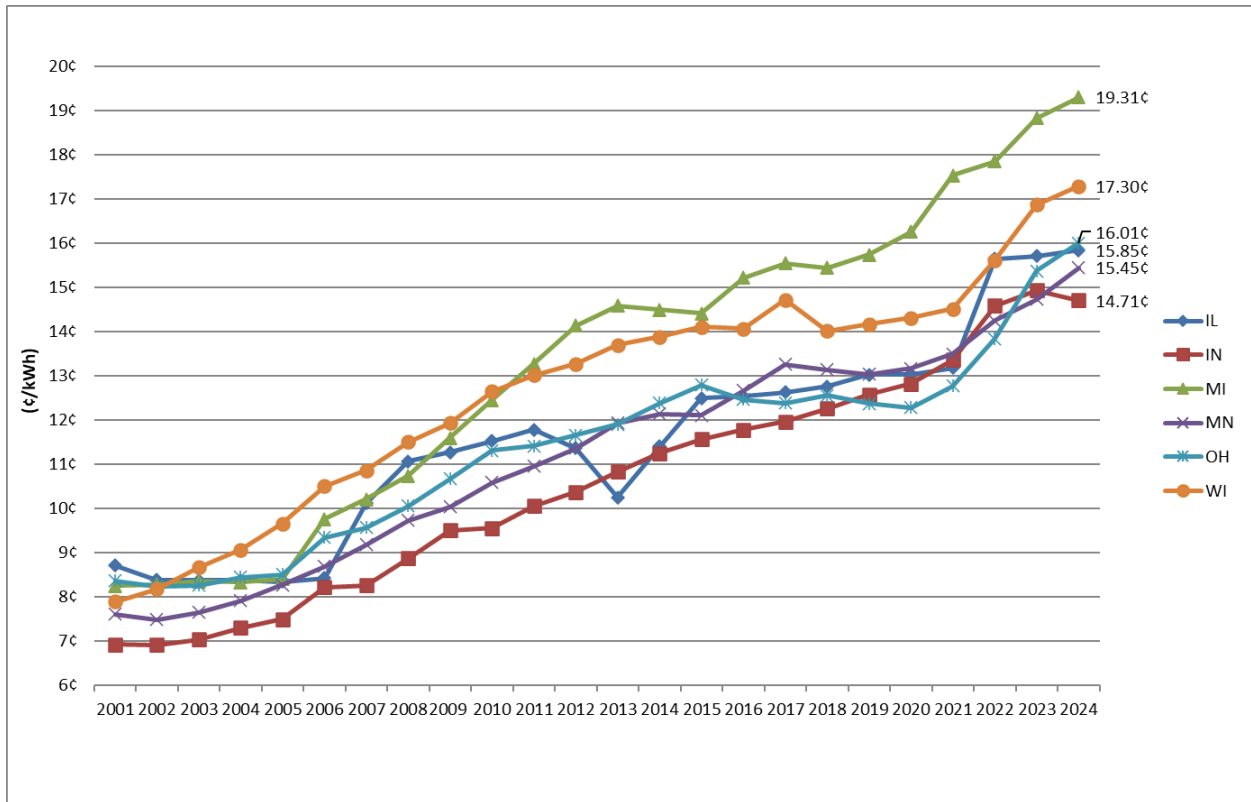
Source: Form EIA-861M (formerly EIA-826) detailed data (<https://www.eia.gov/electricity/data/eia861m/>). Current and Historical Monthly Retail Sales, Revenues, and Average Retail Price by State and By Sector (Form EIA-826). 2024.*

*2024 data is only through September and may change.

¹⁵ Benchmarking data is sourced from the [U.S. Energy Information Administration \(EIA\)](https://www.eia.gov/). EIA's data may include some minor inconsistencies and is subject to change retroactively.

The figure below reflects the average residential retail rates for neighboring Midwest states from 2001 through 2024. In 2024, Michigan's average residential retail rates ranked the highest among six Midwest states at \$0.1931/kWh. Prices are based on actual reported statewide utility sales and revenues for each year and are not adjusted for inflation.

Average Residential Retail Rates for Midwest 2001-2024*

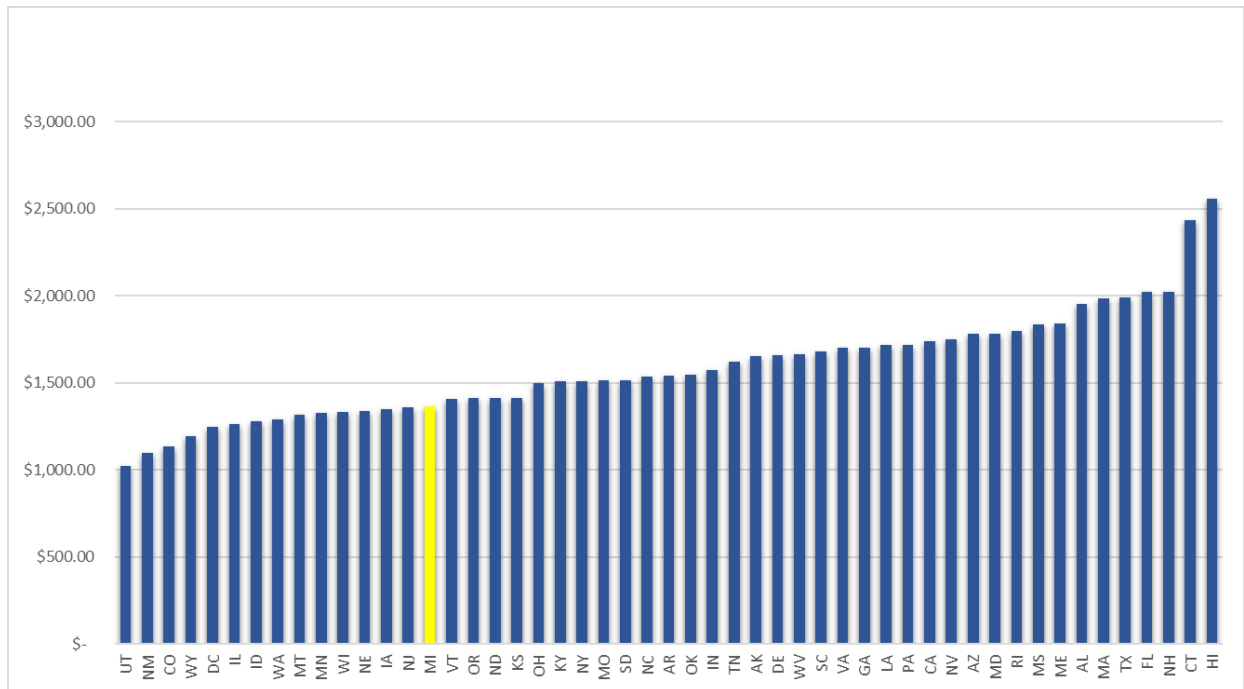


Source: Form EIA-861M (formerly EIA-826) detailed data (<https://www.eia.gov/electricity/data/eia861m/>). Current and Historical Monthly Retail Sales, Revenues, and Average Retail Price by State and By Sector (Form EIA-826). 2024.*

*2024 data is only through September and may change.

The figure below reflects combined average annual residential electric and natural gas bills. While average rates are important, the actual amount paid by residential customers in bills for electric and natural gas service provides a sense of the impact of energy costs on Michigan residents relative to customers in other states. Utility services are typically billed based on usage per unit (e.g., one kilowatt-hour of electricity), so states with higher energy usage have more unit sales over which to recover energy costs and may end up with lower average rates (total revenues divided by total sales) as a result. Michigan ranks below the national average in this regard¹⁶.

2023 Average Residential Electric and Natural Gas Bill

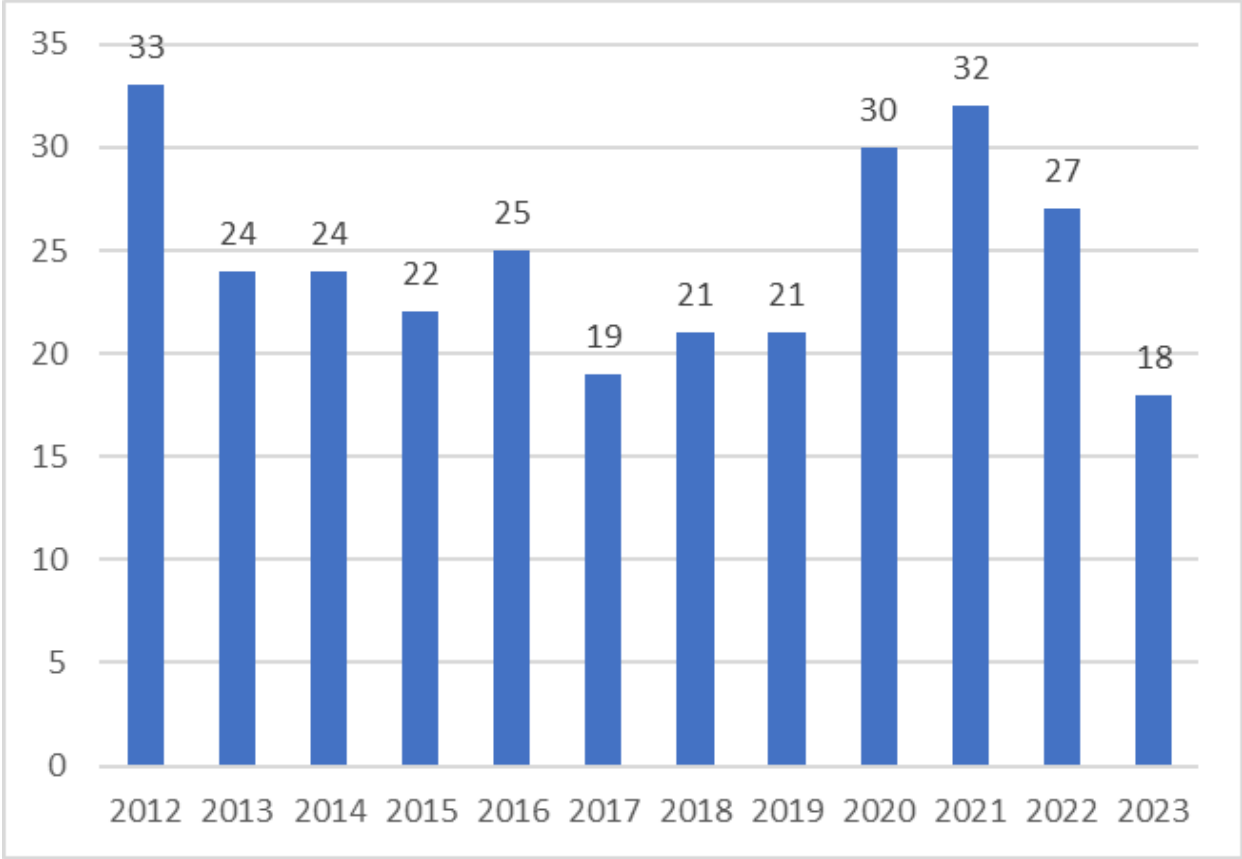


Source: <https://www.eia.gov> - Data through 2023

¹⁶ Michigan's average is \$1,363.34; the US average is \$1,586.06.

The figure below reflects Michigan’s combined average residential electric and natural gas bill rankings (from lowest to highest) from 2012 through 2023 compared to all other states. Michigan’s residential bills are 18th lowest among other states.

Michigan Total Bill Rank By Year

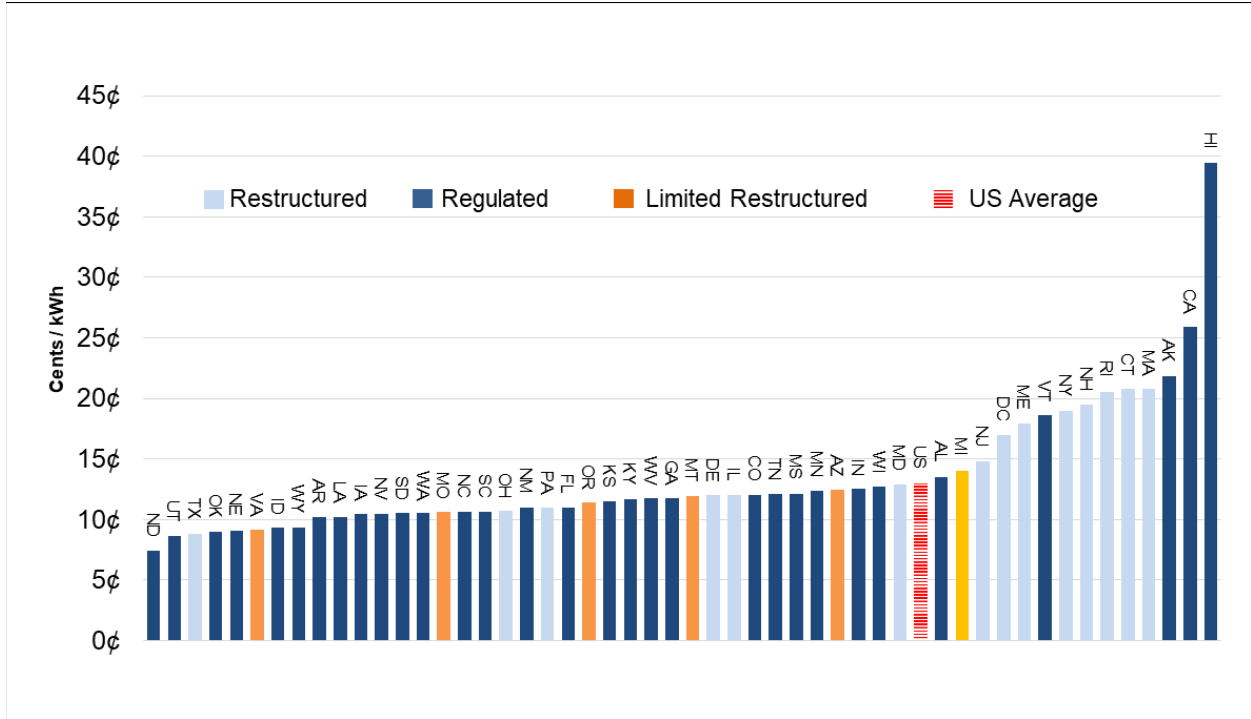


Source: <https://www.eia.gov> - Data through 2023

Commercial Rates

The figures below reflect the 2024 average commercial retail rates. In 2024, Michigan's commercial average retail rates ranked thirteenth highest of the jurisdictions with some type of restructured market at \$0.1405/kWh.

Average Commercial Retail Price, 2024

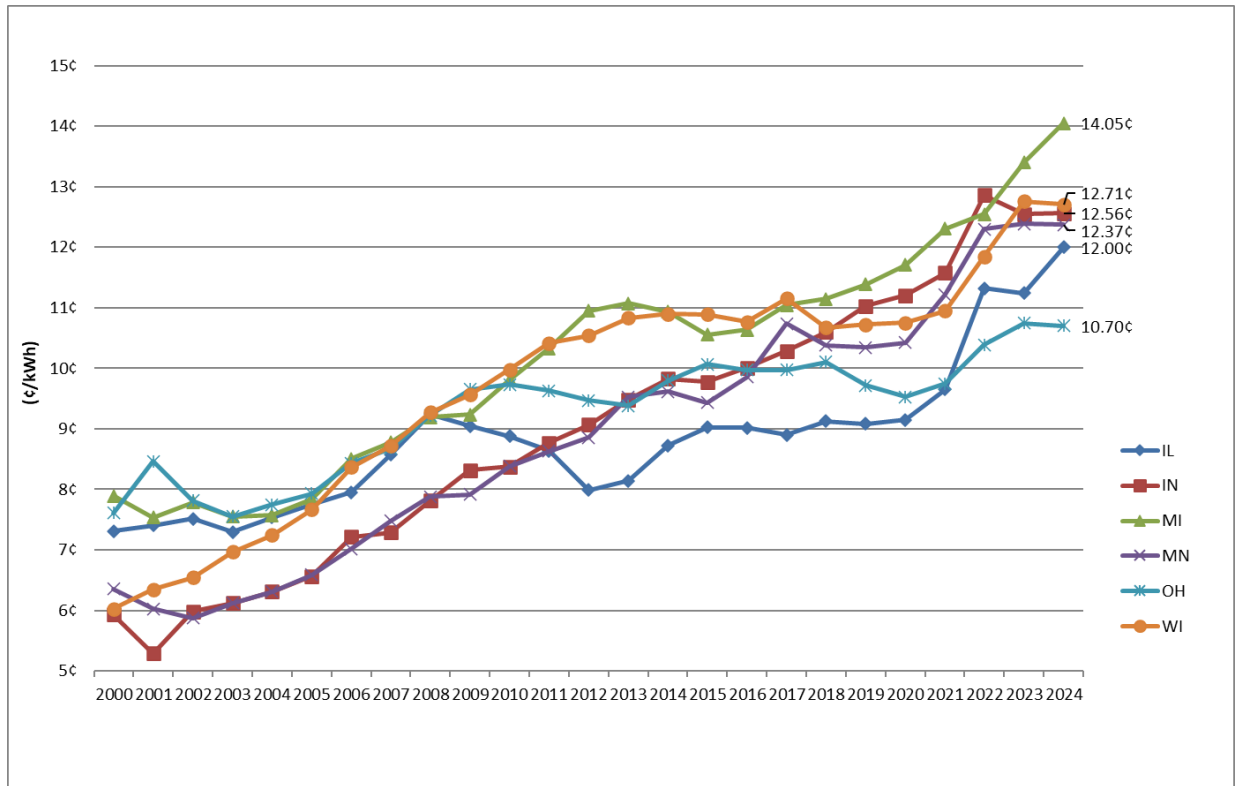


Source: Form EIA-861M (formerly EIA-826) detailed data (<https://www.eia.gov/electricity/data/eia861m/>). Current and Historical Monthly Retail Sales, Revenues, and Average Retail Price by State and By Sector (Form EIA-826). 2024.*

*2024 data is only through September and may change.

The figure below reflects the average commercial retail rates for neighboring Midwest states from 2000 through 2024. In 2024, Michigan's average commercial retail rates ranked the highest among six Midwest states at \$0.1405/kWh. Prices are based on actual reported statewide utility sales and revenues for each year and are not adjusted for inflation.

Average Commercial Retail Rates for Midwest 2000-2024*



Source: Form EIA-861M (formerly EIA-826) detailed data (<https://www.eia.gov/electricity/data/eia861m/>). Current and Historical Monthly Retail Sales, Revenues, and Average Retail Price by State and By Sector (Form EIA-826). 2024.*

*2024 data is only through September and may change.

Industrial Rates

The figure below reflects the 2024 average industrial retail rates. In 2024, Michigan's industrial retail rates ranked twenty-second highest among jurisdictions with some type of restructured market at \$0.0832/kWh.

Average Industrial Retail Price, 2024

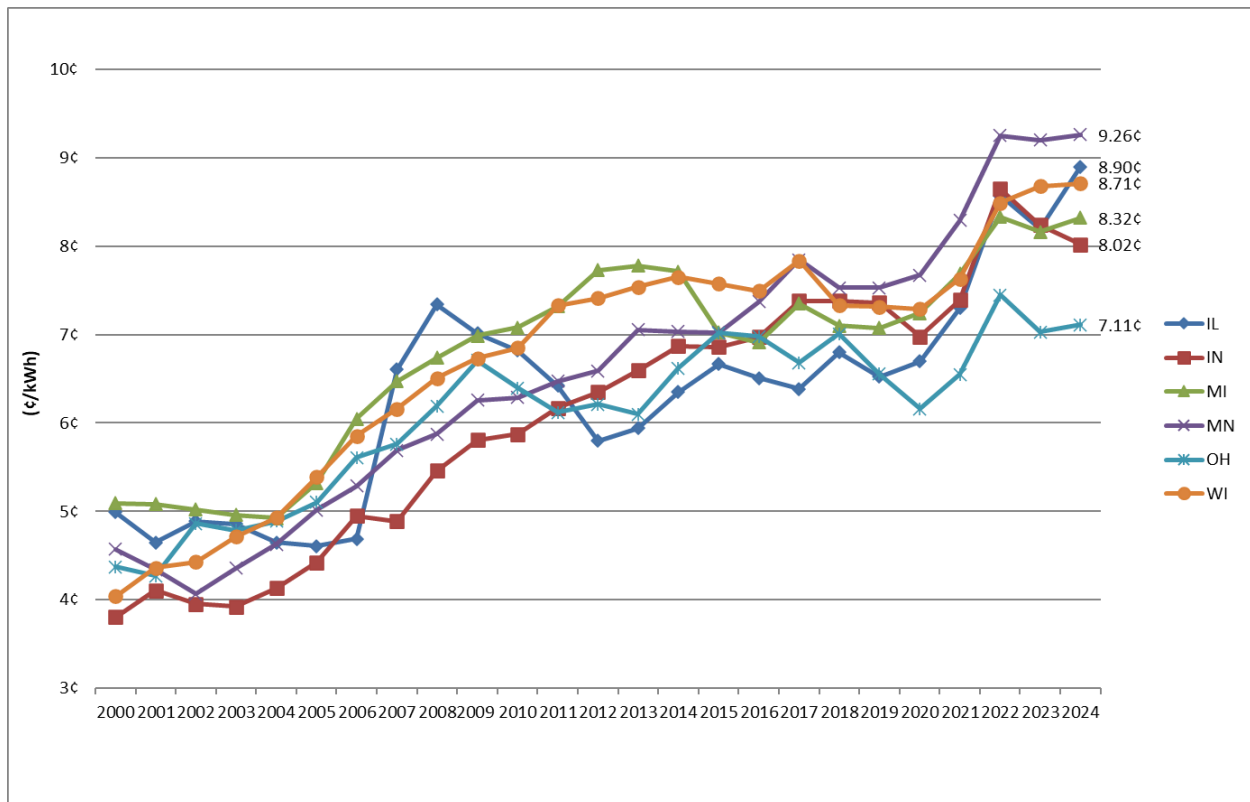


Source: Form EIA-861M (formerly EIA-826) detailed data (<https://www.eia.gov/electricity/data/eia861m/>). Current and Historical Monthly Retail Sales, Revenues, and Average Retail Price by State and By Sector (Form EIA-826). 2024.*

*2024 data is only through September and may change

The figure below reflects the average industrial retail rates for the neighboring Midwest states from 2000 through 2024. In 2024, Michigan's average industrial retail rates ranked the third lowest among the six Midwest states at \$0.0832/kWh. Prices are based on actual reported statewide utility sales and revenues for each year and are not adjusted for inflation.

Average Industrial Retail Rates for Midwest 2000-2024*



Source: Form EIA-861M (formerly EIA-826) detailed data (<https://www.eia.gov/electricity/data/eia861m/>). Current and Historical Monthly Retail Sales, Revenues, and Average Retail Price by State and By Sector (Form EIA-826). 2024.*

*2024 data is only through September and may change.

Commission Action Related to Electric Choice and Customer Protections

The following orders further supported and implemented the framework for Michigan’s electric customer choice programs, the provisions of Act 141, and the amendments of Act 286, Act 295, and Act 341¹⁷. Throughout 2024 the Commission issued the following orders in relation to Electric Customer Choice:

- One order approving an application for licensure as an AES.
- Three orders relating to capacity demonstration requirements provided for in Act 341.
 - Two orders setting state reliability mechanism capacity rates that may be applicable to Retail Open Access load if AES capacity demonstration requirements are not met by AESs serving in Michigan.

See **Appendix 2** for a complete list and further detail on these orders.

Commission Action on Customer Education

Due to the limit on participation, no licensed AESs are currently marketing or enrolling residential customers. Because of this, there is no current customer education campaign by the MPSC. The MPSC does have a dedicated webpage¹⁸ for consumer information, which includes a Consumer Tip page regarding Michigan’s Electric Choice program.

Recommendation for Legislation

The Commission is continually implementing the provisions outlined in PA 341 and has no recommendations for legislation at this time. Throughout 2024, the Commission continued to engage with interested parties regarding the resource adequacy and state reliability mechanism provisions within the 2016 energy law¹⁹. The Commission will continue to closely monitor the impact of the implementation of the 2016 energy law on energy providers and customers in Michigan. Although the Commission does not recommend any legislative changes at this time, the Commission stands ready to assist the Legislature for any reason.

¹⁷ Commission orders are available on the Commission website at <https://mi-psc.my.site.com/s/>

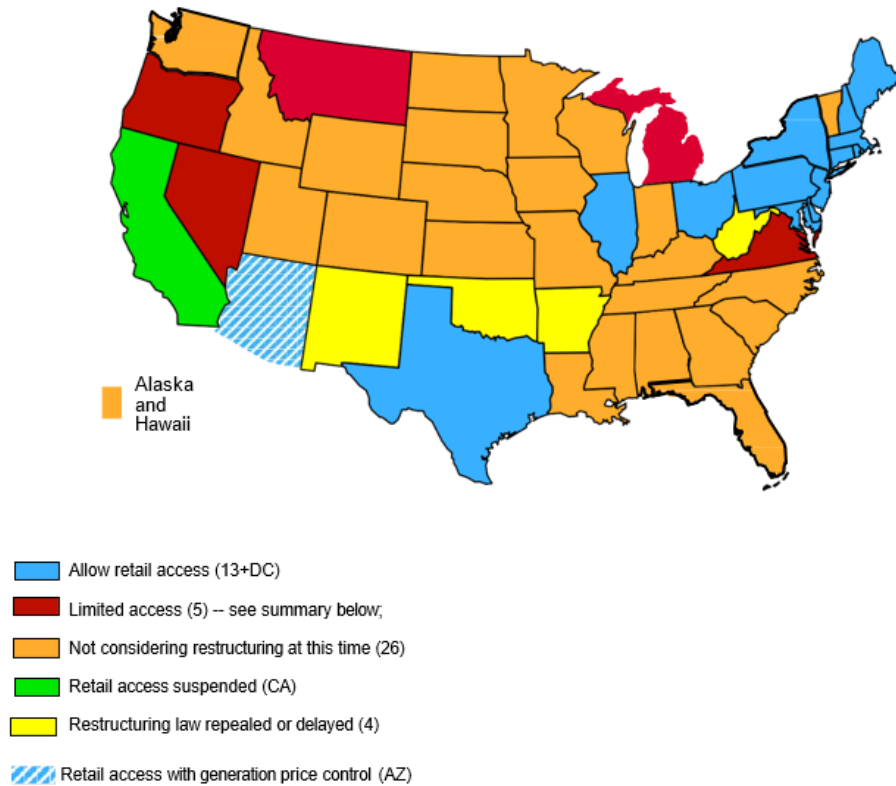
¹⁸ https://www.michigan.gov/mpsc/0,9535,7-395-93308_93325_93423_93501_93509---,00.html

¹⁹ See https://www.michigan.gov/mpsc/0,4639,7-159-80741_80743-411741--,00.html and http://www.michigan.gov/mpsc/0,4639,7-159-80741_80743-406252--,00.html

Appendices

Appendix 1

Figure 1: Retail Electric Markets In the U.S.



MI: alternative suppliers limited to maximum of 10% of electric utility's retail sales

MT: Retail access repealed for customers < 5 MW and for all customers that choose utility service

NV: retail access limited to large customers > or = 1 MW, with permission of the PUC

OR: nonresidential consumers of PGE and Pacific Power have option to buy electricity from an alternative provider

VA: Retail access ended for most customers – except those >5 MW (w/conditions for return)

Source: Ken Rose, August 2018 58th IPU Annual Regulatory Studies Program.

Figure 2

AES Customers in Consumers Energy Service Territory, Year End 2024

AES Name	Number of Customers						MW Served					
	2019	2020	2021	2022	2023	2024	2019	2020	2021	2022	2023	2024
Constellation NewEnergy Inc.	841	831	822	821	820	821	398	382	392	419	387	394
CMS ERM MI	0	0	0	0	0	29	0	0	0	0	0	58
Direct Energy Business ¹	40	37	31	13	12	12	6	6	5	3	3	3
Energy Harbor fka FirstEnergy Solutions ²	12	12	13	10	11	7	101	94	98	64	99	28
Calpine Energy Solutions, LLC fka Noble ⁴	65	65	65	61	61	87	69	66	64	63	63	81
Spartan Renewable Energy	5	5	4	4	4	4	28	28	25	25	24	24
Wolverine Power Marketing	26	26	28	29	29	29	137	121	125	127	127	126
Totals	989	976	963	938	937	964	739	697	709	701	701	714

Note: ¹On September 1, 2008, Strategic Energy, LLC, changed its name to Direct Energy Business, LLC.

² On May 29, 2020, First Energy Solutions Corp., changed its name to Energy Harbor.

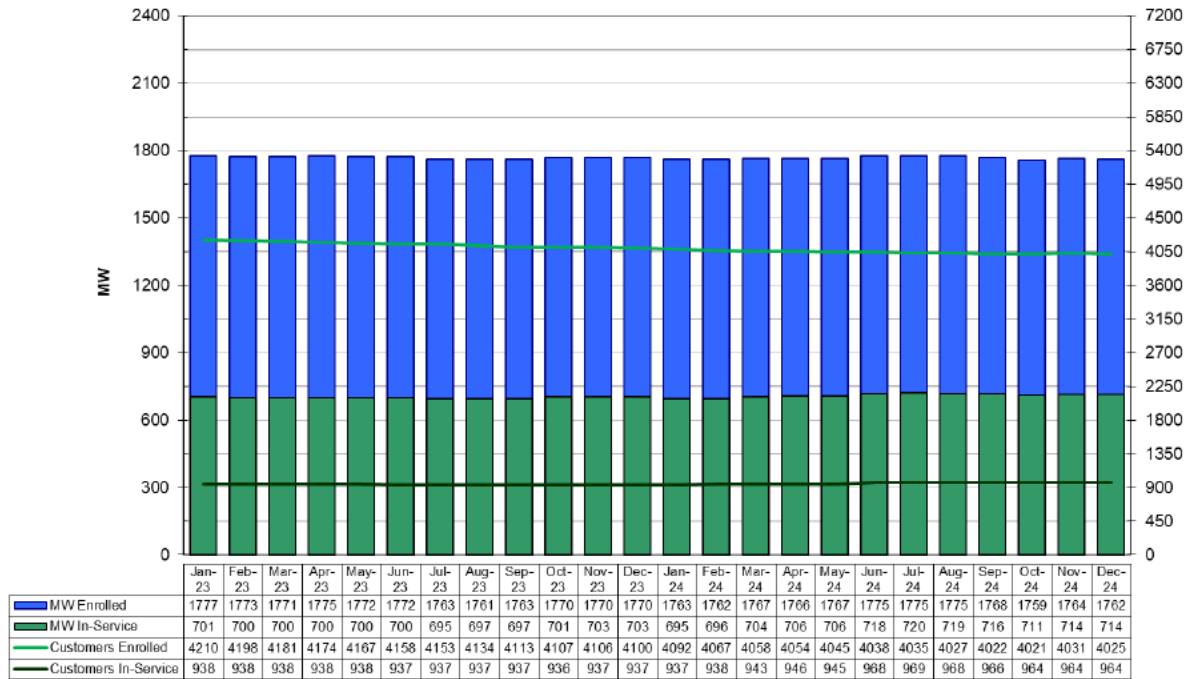
³ On November 3, 2014, Integrys Energy Services, Inc., merged with Constellation, a subsidiary of Exelon Corporation. A legal name change from Integrys Energy Services, Inc. to Constellation Energy Services, Inc. became effective on April 1, 2015. Customers enrolled with Constellation Energy Services fka Integrys were transferred to Constellation NewEnergy Inc. during 2017.

⁴ On November 1, 2010, Sempra Energy Solutions, LLC, changed its name to Noble Americas Energy Solutions, LLC. On December 1, 2016, Noble Americas Energy Solutions, LLC changed its name to Calpine Energy Solutions, LLC.

Figure 3



Consumers Energy Electric Customer Choice Program Activity
 (Cumulative Numbers of Customers & MW, Enrolled and In-Service, by Month)
 January 2023 - December 2024



Source: Consumers Energy Company, December 2024.

Notes:

MW Enrolled – Total megawatts actively being served by an AES plus the total megawatts held by the queued customers.

MW In Service – Total megawatts actively being served by an AES.

Customers Enrolled – Total number of customers actively being served by an AES plus the total number of queued customers.

Customers In Service – Total customers actively being served by an AES.

Figure 4

AES Customers in DTE Electric Company Service Territory, Year End 2024

AES Name	Number of Customers						MW Served					
	2019	2020	2021	2022	2023	2024	2019	2020	2021	2022	2023	2024
CMS ERM MI	12	12	12	20	19	82	35	35	35	35	35	55
Just Energy Solutions fka Commerce ¹	93	84	75	68	0	0	3	2	2	2	0	0
Constellation NewEnergy	2,227	2,191	2,487	2,348	2,263	2,226	515	505	603	583	597	629
Direct Energy Business ²	1,271	1,219	1,181	1,100	1,071	1,008	370	364	361	332	331	311
Eligo Energy, MI LLC	0	0	0	0	0	0	0	0	0	0	0	0
Energy Harbor fka FirstEnergy Solutions ³	19	19	53	64	70	51	7	7	35	36	32	16
Constellation Energy Services fka Integrys ⁴	0	0	0	0	0	0	0	0	0	0	0	0
MidAmerican ⁵	0	0	0	0	0	0	0	0	0	0	0	0
Calpine Energy Solutions, LLC fka Noble ⁶	907	905	901	1,014	978	972	123	122	124	133	130	127
Wolverine Power Marketing	120	121	37	10	9	9	79	79	160	158	158	158
Totals ⁷	4,649	4,551	4,746	4,624	4,410	4,348	1,132	1,116	1,320	1,279	1,283	1,296

Note: ¹ On April 5, 2017, Commerce Energy Inc. changed its name to Just Energy Solutions, Inc.

² On September 1, 2008, Strategic Energy, LLC, changed its name to Direct Energy Business, LLC.

³ On May 29, 2020, First Energy Solutions Corp., changed its name to Energy Harbor.

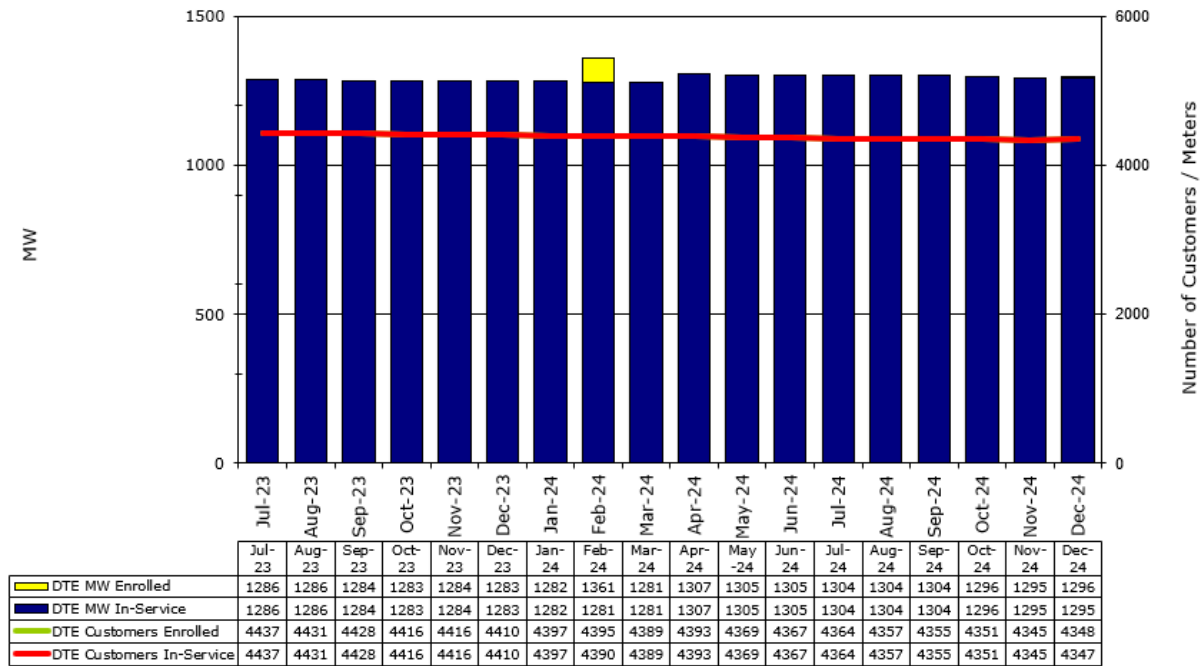
⁴ On November 3, 2014, Integrys Energy Services, Inc., merged with Constellation, a subsidiary of Exelon Corporation. A legal name change from Integrys Energy Services, Inc. to Constellation Energy Services, Inc. became effective on April 1, 2015. Constellation Energy Services, Inc. customers were moved to Constellation NewEnergy in 2018.

⁵ During 2016, MidAmerican Energy Company transferred their customers to MidAmerican Energy Services and voluntarily rescinded its AES license. MidAmerican now refers to MidAmerican Energy Services.

⁶ On November 1, 2010, Sempra Energy Solutions, LLC, changed its name to Noble Americas Energy Solutions, LLC. On December 1, 2016, Noble Americas Energy Solutions, LLC changed its name to Calpine Energy Solutions, LLC.

⁷ Total does not add correctly due to rounding

Figure 5: DTE Electric Customer Choice Program Activity



Source: DTE Electric Company, December 2024.

Notes:

MW Enrolled – Megawatts that have requested to switch to another AES.

MW In Service - Total megawatts actively being served by an AES.

Customers Enrolled –Customers who have requested to switch to another AES.

Customers In Service – Total customers actively being served by an AES.

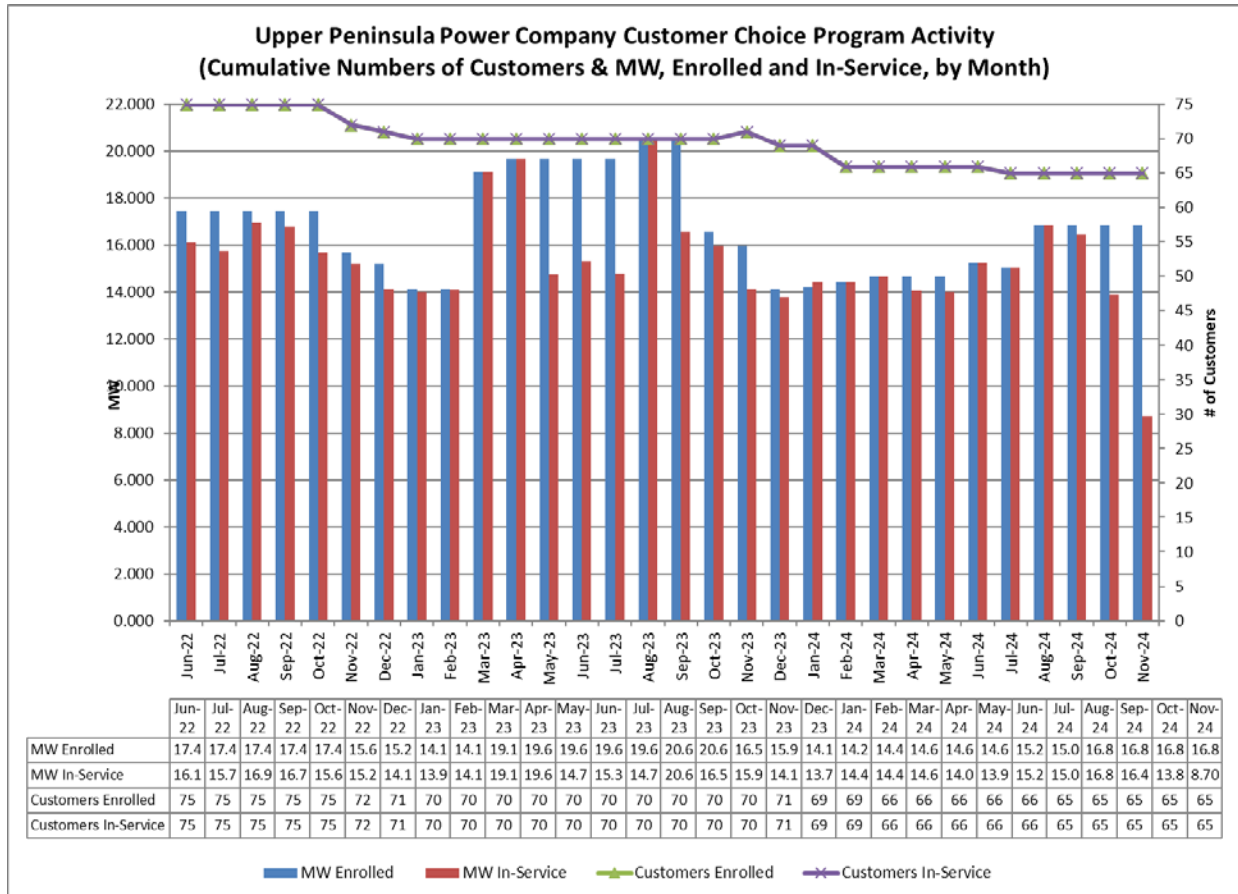
Figure 6

AES Customers in the UPPCo Service Territory, Year End

AES Name	Number of Customers						MW Served					
	2019	2020	2021	2022	2023	2024	2019	2020	2021	2022	2023	2024
Constellation Energy Services fka Integrys ¹	0	0	0	0	0	0	0	0	0	0	0	0
Constellation NewEnergy	51	51	71	69	67	63	6.33	6.174	7.712	7.125	6.942	6.925
UP Power Marketing	0	0	0	0	0	0	0	0	0	0	0	0
Wolverine Power Marketing	2	2	2	2	2	2	6.95	5.908	7.049	7.025	6.852	1.783
Totals	53	53	73	71	69	65	13.28	12.08	14.76 1	14.150	13.794	8.708

Note: ¹On November 3, 2014, Integrys Energy Services, Inc., merged with Constellation, a subsidiary of Exelon Corporation. A legal name change from Integrys Energy Services, Inc. to Constellation Energy Services, Inc. became effective on April 1, 2015. Constellation Energy Services, Inc. customers were moved to Constellation NewEnergy in 2018.

Figure 7



Source: Upper Peninsula Power Company, December 2024.

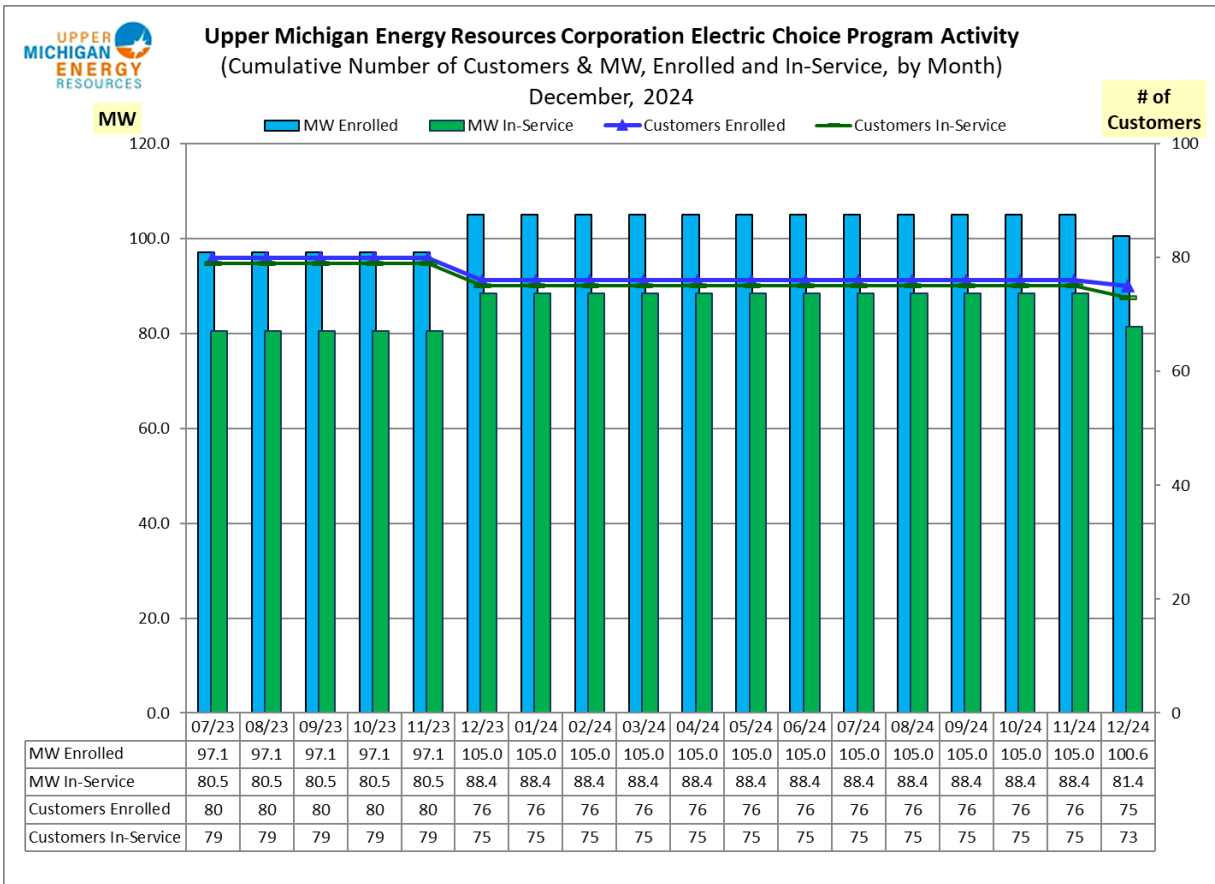
Figure 8

AES Customers in the UMERC Service Territory, Year End 2024

AES Name	Number of Customers						MW Served					
	2019	2020	2021	2022	2023	2024	2019	2020	2021	2022	2023	2024
Constellation Energy Services fka Integrys ¹	0	0	0	0	0	0	0	0	0	0	0	0
Constellation NewEnergy	84	84	82	79	76	75	72.2	72.2	69	80.5	88.4	100.6
Totals	84	84	82	79	76	75	72.2	72.2	69	80.5	88.4	100.6

Note: ¹On November 3, 2014, Integrys Energy Services, Inc., merged with Constellation, a subsidiary of Exelon Corporation. A legal name change from Integrys Energy Services, Inc. to Constellation Energy Services, Inc. became effective on April 1, 2015. Constellation Energy Services, Inc. customers were moved to Constellation NewEnergy in 2018.

Figure 9



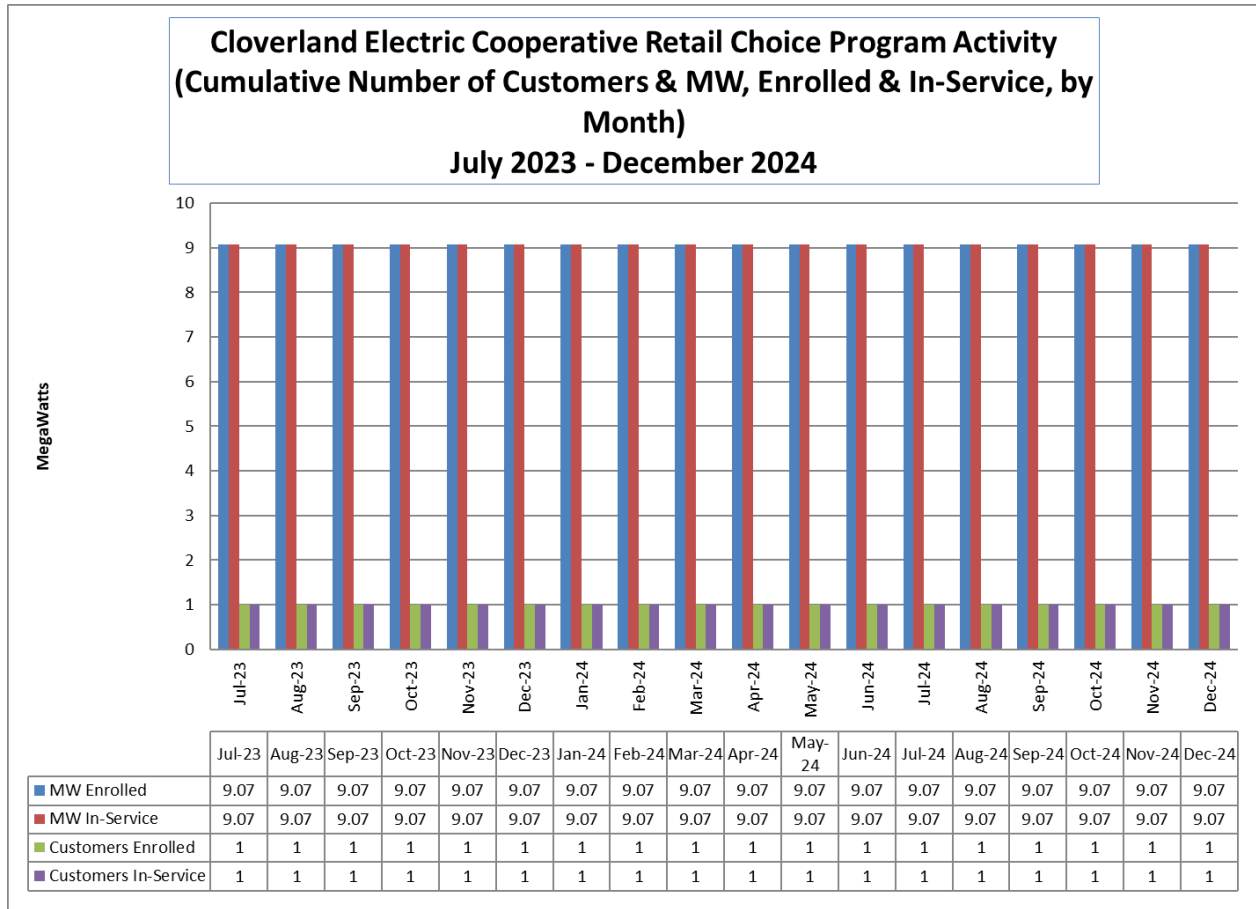
Source: Upper Michigan Energy Resources Corporation, December 2024

Figure 10

AES Customers in the Cloverland Service Territory, Year End 2024

AES Name	Number of Customers						MW Served					
	2019	2020	2021	2022	2023	2024	2019	2020	2021	2022	2023	2024
Spartan Renewable	1	1	1	1	1	1	8.7	9.07	9.07	9.07	9.07	9.07
Totals	1	1	1	1	1	1	8.7	9.07	9.07	9.07	9.07	9.07

Figure 11



Source: Cloverland Electric Cooperative, December 2024.

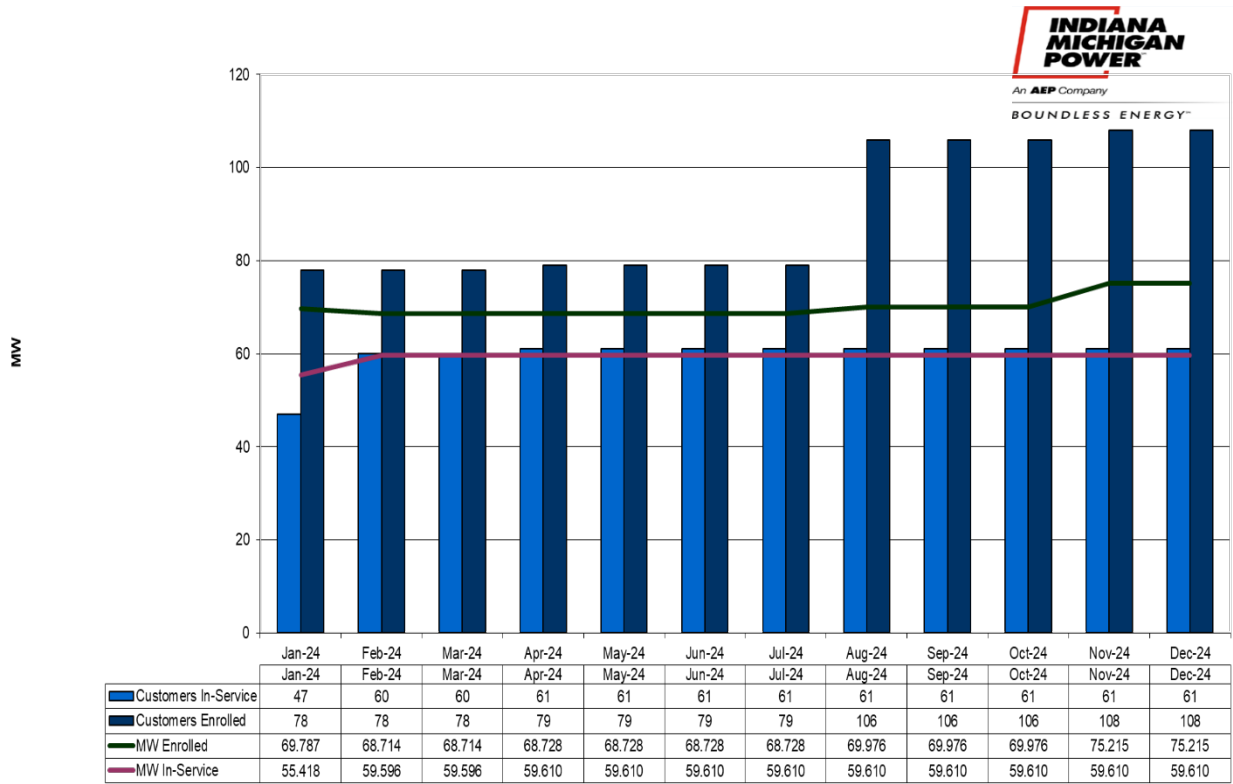
Figure 12

AES Customers in the Indiana Michigan Power Service Territory, Year End 2024

AES Name	Number of Customers					MW Served				
	2020	2021	2022	2023	2024	2020	2021	2022	2023	2024
Constellation NewEnergy, Inc.	41	48	47	47	61	52.86	55.1	54.6	55.42	59.61
Totals	41	48	47	47	61	52.86	55.1	54.6	55.42	59.61

Figure 13

Electric Choice Customer Participation



Source: Indiana Michigan Power, December 2024.

Appendix 2

Michigan Public Service Commission Orders Related to Implementation of Public Acts 141 of 2000, 286 and 295 of 2008, and 341 of 2016

Provisions in 2016 Act 341 Sec. 6w require all electric providers, including AESs, to demonstrate to the MPSC that they have enough resources to serve the anticipated needs of their customers four years forward. If an AES cannot or chooses not to arrange generating capacity to meet the new requirement, they would be subject to the SRM Charge. The SRM Charge is set by the MPSC and would be paid to the utility.

The following are SRM cases that impact AESs:

- Consumers Energy Company – **U-21224**, order dated January 19, 2023
- Upper Peninsula Power Company – **U-21555**, order dated September 26, 2024
- Upper Michigan Energy Resources Corporation – **U-21370**, order dated August 30, 2023
- Cloverland Electric Cooperative – **U-20508**, order dated July 2, 2019
- DTE Electric Company – **U-21621**, order dated September 5, 2024
- Indiana Michigan Power Company – **U-20359**, order dated January 23, 2020

U-21775 - In the matter, on the Commission's own motion, to open a docket for load serving entities in Michigan to file their capacity demonstrations as required by MCL 460.6w. On August 22, 2024, the Commission accepted in part Staff's Report and adopted the recommendations with respect to the 2028-2029 planning year capacity demonstration.

U-21393 - In the matter, on the Commission's own motion, to open a docket for load serving entities in Michigan to file their capacity demonstrations as required by MCL 460.6w. On July 26, 2023, the Commission opened this docket for all electric providers, including AESs, to file their capacity demonstrations for the 2027/2028 planning year. The deadline for filing these demonstrations is February 24, 2025, and March 3, 2025, for utilities and March 17, 2025 for AESs.

U-18444 - In the matter on the Commission's own motion to open a contested case proceeding for determining the process and requirements for a forward locational requirement under MCL 460.6w. On October 11, 2017, the Commission opened a contested case proceeding for determining the process and requirement for a forward locational requirement under MCL 460.6w.

U-21650 – application for a license as an alternative electric supplier. On August 22, 2024, the Commission approved the application for American Rural Cooperative Power to become a licensed AES in Michigan.

U-21776 - In the matter, on the Commission's own motion, regarding the regulatory reviews, determinations, and/or approvals necessary for American Rural Cooperative Power, Inc. to fully comply with Public Act 295 of 2008. On August 22, 2024, the Commission opened docket no. U-21776 for American Rural Cooperative Power, Inc. to file its Renewable Energy Plan.

Appendix 3

Michigan Licensed Alternative Electric Suppliers

Company Name, Address, Contact Information	Case Number	Authorization Date
AEP Energy, Inc. 2723 South State Street, Suite 150, Ann Arbor, MI 48104 Phone: 866-258-3782 Email: care@AEPenergy.com URL: www.AEPenergy.com	U-14764	2/9/2006
American Rural Cooperative Power, Inc. 725 E Portage Ave., Sault Ste. Marie, MI 49783 Phone: 800-562-4953; Email: jake.brown@arcpowerusa.com URL: www.arcpowerusa.com	U-21650	8/22/2024
BP Energy Retail Company, LLC 705 South Main St., Suite 101A, Plymouth, MI 48170 Phone: 877-432-4530 Email: retailcustomercare@bp.com URL: www.bp.com/retailenergy	U-17937	2/23/2016
Calpine Energy Solutions f/k/a Noble Americas Energy Solutions, LLC 2000 Town Center, Suite 1900, Southfield, MI 48075 Phone: 877-273-6772 Email: customerservice@CalpineSolutions.com URL: www.CalpineSolutions.com	U-13361	4/16/2002
CMS ERM Michigan LLC One Energy Plaza, Suite 1060, Jackson, MI 49201- 2277 Phone: 517-740-4502 URL: www.cmsenergy.com	U-12567	8/17/2000
Constellation NewEnergy, Inc. 6 Parklane Blvd., Building 4, Suite 1060, Dearborn, MI 48152 Phone: 855-4651244 Email: home@constellation.com URL: www.constellation.com	U-13660	12/20/2002
Dillon Power, LLC 23409 Jefferson Ave., Suite 110, St. Clair Shores, MI 48080 Phone: 866-919-2679 Email: shaundillon@dillonpower.com URL: www.dillonpower.com	U-17723	1/13/2015
Direct Energy Services, LLC 110 W Michigan Ave., Suite 500, Lansing, MI 48933 Phone: 866-326-8559 Email: csdirectenergy@directenergy.com URL: www.directenergy.com	U-14724	12/20/2005
Energy Harbor LLC f/k/a FirstEnergy Solutions 40600 Ann Arbor Rd. E, Suite 201, Plymouth, MI 48170 Phone: 888-245-6359 Email: firstchoice@fes.com URL: www.energyharbor.com	U-13244	1/08/2002

Company Name, Address, Contact Information	Case Number	Authorization Date
Energy International Power Marketing 6840 N. Haggerty Rd., Canton, MI 48187 Phone: 734-354-2000 Email: rfawaz@energyintl.com URL: https://energyintl.com/	U-13280	2/01/2002
Energy Services Providers, Inc. d/b/a Michigan Gas & Electric 930 State Street , Harbor Springs, MI 49740 Phone: 866-705-3610 Email: Customerservice@MIGandE.com URL: www.MIGandE.com	U-16912	4/6/2012
ENGIE Gas & Power 25900 Greenfield Road, Suite 245, Oak Park, MI 48237 Phone: 855-327-6937 Email: epg.customer@engie.com URL: www.engiepowerandgas.com	U-17492	1/23/2014
Interstate Gas Supply, Inc. d/b/a IGS Energy 306 East Main Street, Suite 230, Niles, MI 49120 Phone: 888-993-0997 Email: choice@igsenergy.com URL: www.igsenergy.com	U-17243	6/28/2013
Just Energy Solutions, Inc. f/k/a Commerce Energy Inc. 30300 Telegraph Rd. Suite 350, Bingham Farms, MI 48025 Phone: 866-587-8674 Email: cswest@justenergy.com URL: www.justenergy.com	U-13203	11/20/2001
MidAmerican Energy Services, LLC 39555 Orchard Hill Place, Suite 600, Novi, MI 48375 Phone: 800-432-8574 Email: support@midamericanenergyservices.com URL: www.midamericanenergyservices.com	U-17888	9/10/2015
Nordic Energy Services, LLC 2723 South State Street, Suite 150, Ann Arbor, MI 48104 Phone: 877-808-1022 Email: customerservice@nordicenergy-us.com URL: www.nordicenergy-us.com	U-17968	4/14/2016
NRG Energy, Inc. 110 W Michigan Ave., Suite 500, Lansing, MI 48933 Phone: 866-348-4193 Email: DEBSales@directenergy.com URL: www.business.directenergy.com	U-13609	11/7/2002
Spartan Renewable Energy, Inc. 10125 W. Watergate Road, P. O. Box 100, Cadillac, MI 49601 Phone: 877-907-WIND Email: cgeiger@spartanrenewable.com URL: www.spartanrenewable.com	U-15309	09/18/2007
Texas Retail Energy, LLC 208 N Capitol Ave., 3 rd Floor, Lansing, MI 48933 Phone: 866-532-0761	U-17076	12/6/2012
U.P. Power Marketing LLC 29639 Willow Rd., White Pine, MI 49971 Phone: 906-885-7100 Email: zach.halkola@traxys.com URL: www.traxys.com	U-14594	10/25/2007
Wolverine Power Marketing Cooperative, Inc. 10125 W. Watergate Road, P. O. Box 100, Cadillac, MI 49601 Phone: 877-907-WPMC Email: sfrederick@wpmc.coop URL: www.wpmc.coop	U-12723	11/20/2000

This list is current as of December 2024. An up-to-date AES directory is maintained on the [MPSC](#) Website.